

 **FAIRFAXIMAGING,INC.**

4200-A Technology Court
Chantilly, VA 20151-1214
Tel: 703.802.1220
Fax: 703.802.2878
Email: sales@fairfaximaging.com
www.fairfaximaging.com

Quick Modules™

The Total *Document, Fax & Payment* Processing Solution

In 1994, Fairfax Imaging, a leading provider of imaging applications, products and components, introduced *Quick Modules*: the world's most advanced and the first fully integrated simultaneous forms, fax & check processing solution.


Without a doubt you'll find *Quick Modules* extraordinary. Among its many features, this powerful solution processes and identifies incoming mail (i.e., forms, correspondence, checks, coupons, etc.) the way you receive it. That means no presorting; only building batches. *Quick Modules* uses a state-of-the-art neural recognition process to identify and capture virtually any data from unstructured and structured forms regardless of the order they enter the workflow. It supports virtually all modern scanners, transports and databases on the market. Even more important to your operation's success, Fairfax Imaging backs their award winning product suite with total commitment to customer service and support.

The Superior Solution

Since its founding, Fairfax Imaging has proven it is leading the way in automated solutions, providing high-quality products and integration services to the document, fax and payment processing industries. Fairfax Imaging's capable and experienced IT professionals designed a multiple award-winning suite of unrivaled products, to not only meet but exceed the requirements of their clients.

A number of Fortune 500 corporations and government clients in the US, entrust their automated and human-assisted data capture needs to systems built and installed by Fairfax Imaging. By doing so, these organizations realize a tremendous improvement in the efficiency and productivity of their workforce, reaping immediate and tangible returns on their investments in new technologies.

We invite you to further explore how working with Fairfax Imaging and using *Quick Modules* can put you in touch with the best technology available today and furnish powerful solutions that will take your business to the next level.



Keep up, with automation that will save resources, speed processing and enhance customer service

In October 2004, The Check Clearing for the 21st Century Act made it legal for businesses to replace paper checks with digital copies of the original.

Systemic, High-level Forms Processing *Quick Modules* handles multi-sized documents without presorting in one common process flow. No need to separate checks and documents into different data streams. Just open the envelope, stack the contents (including the envelope itself if you wish), and scan away!

Unstructured Forms Processing *Quick Modules* accurately recognizes data on complex and unusual documents such as invoices, order forms, enrollment forms, tax and wage documents, etc., independently of its location on the document, allowing your existing documents to be routed into the work flow. *Quick Modules* also orients the document correctly, enhances image quality, and applies other software enhancements to ensure an accurate recognition time after time.

100% Check 21 Enabled Check 21 truncation eliminates the need for manual encoding and the costs and time of shipping paper checks for processing. Check information is sent to the bank electronically. The bank recognizes and processes the imaged payment information instantly, resulting in substantial savings.

Fax Handling Incoming as well as outgoing fax processing is a breeze. *Quick Modules* identifies the type of form, recognizes the data, and faxes back confirmation. It can also fax notices and reminders until the fax it is looking for has been received by the system. Unsolicited faxes such as sales promotions and menus are filtered out automatically.

Flexible Design *Quick Modules* comes with an advanced comprehensive configuration utility that allows system designers to easily and graphically define system components, design new forms, create new batch compositions, process data and analyze results. It enables the system designer to optimize and tune the entire system's performance.

Systems Integration, Training, Maintenance You'll find *Quick Modules* easy to operate and maintain. Fairfax Imaging commits to a successful installation and operation for your business and offers comprehensive systems integration, training, and maintenance programs. Fairfax Imaging employs the finest IT professionals for a seamless integration, provides training that allows the system administrators to harness the full power of the installed system, and tailors a support program versatile and flexible enough to suit your specific needs.

Fairfax Imaging is one of the first to pioneer the successful implementation of this new type of digital check truncation.

Primary Modules

Quick Scan drives all scanners and check transports available on the market. It accepts operator input to set up and control the scanning operation and executes documents count, re-scan function and automatic image quality assurance and control functions.

Quick Enhance dramatically enhances the quality and utility of scanned and faxed images. It automatically corrects skewed images, performs registration, removes random noise, dot-shaded regions and other unwanted lines and distortion.

Quick Capture processes the images and produces the best available ASCII results. It reads a variety of character formats, such as alphanumeric hand print, alphanumeric machine print, check boxes, cursive, and barcode (linear and 2D). **Quick Capture** also recognizes a check's courtesy and legal amounts, then compares and combines the results. A process that dramatically increases recognition rates from only 50% with CAR to greater than 80% with the CAR/LAR combination.

Quick Balance allows operators to fix errors made during the CAR/LAR process. Only transactions with a mismatch between the courtesy and legal amounts are displayed.

Quick Check 21 & Quick Encode **Quick Check 21** creates paperless bank deposits by sending COFF and DSTU x9.37 formatted files directly to the bank. This transmission is completely secure. An alternative to electronic processing, **Quick Encode** provides check encoding and endorsing options, prints deposit slips and provides an audit trail and stamp endorsement.

Quick Key gives operators a flexible key editing and validation environment for correcting patron errors and errors made during OCR/ICR processing. Fields and/or characters that have been flagged for manual data entry are highlighted. It provides validation rule help messages to assist operators in correcting data and offers two different editing modes: tile editor and full context editor.

Quick Review allows operators to perform batch and transaction integrity review and repair. It provides rescan, insertion, deletion, reordering, rebuilding and rotation capabilities for any page or transaction within the batch.

Quick Modules is composed of over twenty-two modules. Each of the components process hundreds of thousands of forms, checks and faxes daily.

The system architect only selects the modules that are purely relevant to that particular solution.

Secondary Modules

Quick Web utilizes state-of-the-art document search and retrieval technologies, accessible by any web browser. All data captured is used as indexes and may be used to retrieve and research the images accordingly. The images can be cut and pasted into any Object Linking and Embedding (OLE), or any other Windows, program or utility. In addition, the retrieval application allows the user to e-mail, print, or fax the queried images, as well as perform workflow among knowledge workers.

Quick Store provides the ability to store media (data and images) on a DVD-ROM or other method of storage.

Quick Purge Provides the ability to purge the documents and data no longer considered necessary for storage. This can be configured as an automated process that occurs periodically (i.e., once a week) or manually when initiated by the operator.

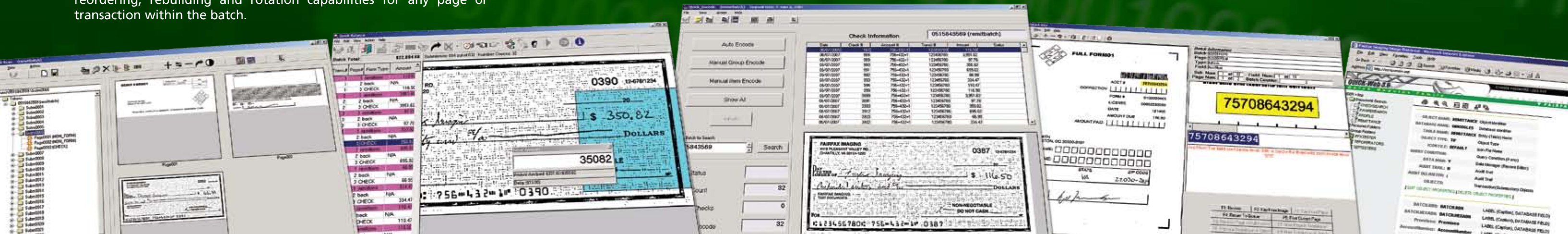
Quick Output receives the results of the automatic data capture and character correction stages and appends or stores the information in an output data file. The data output stage is configured with a user exit DLL, which allows the output to be prepared in any format desired.

Quick Reports uses the Crystal Reports engine, which can interface to any ODBC compliant database. In addition to the standard reports, custom reports can be created to meet the requirements and objectives of the client.

Quick Config allows users to easily configure their own system, create new forms, test the recognition, and handle all aspects of your system administration.

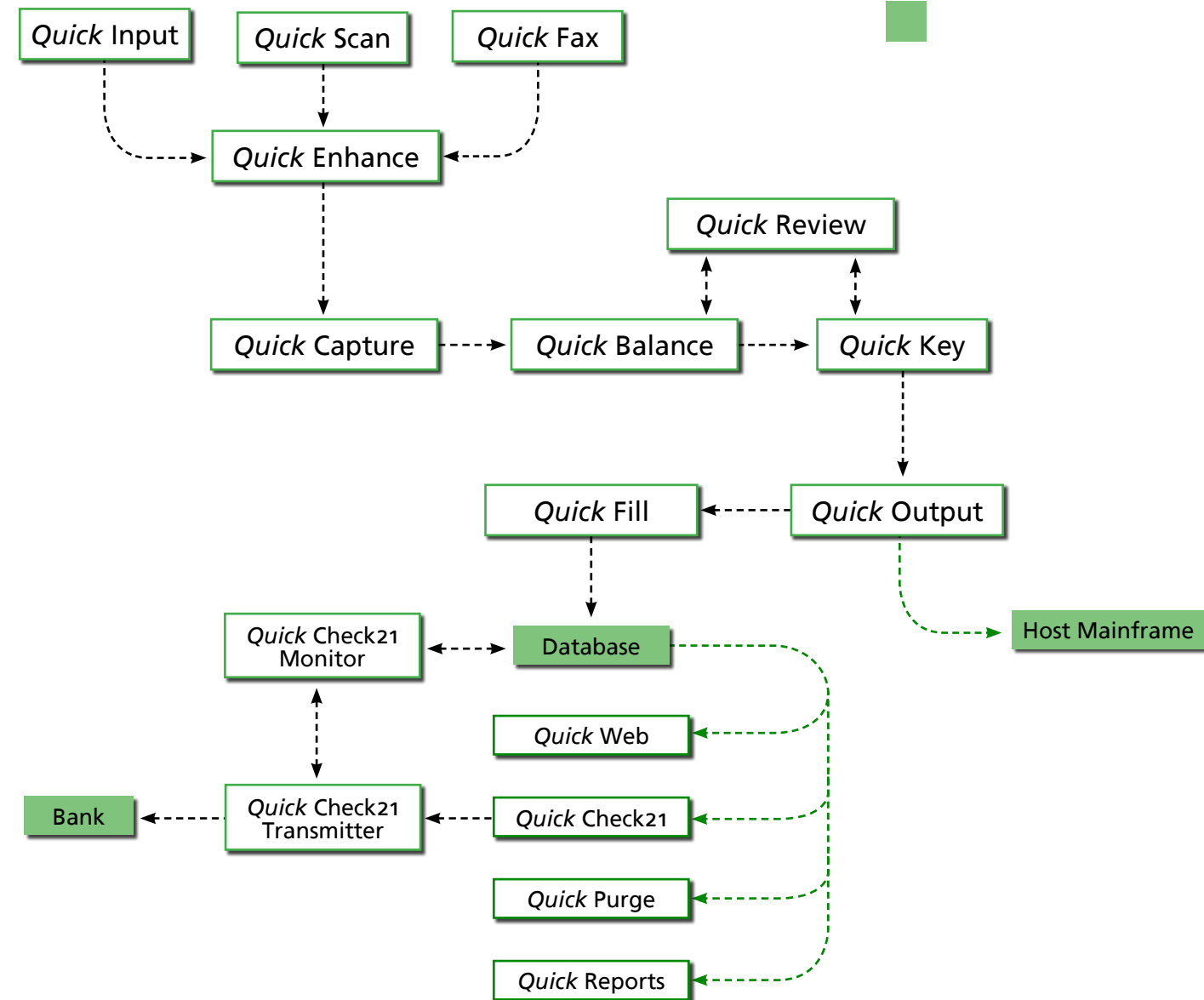
Quick Flow provides the automation of procedures where images, data, or tasks are passed from one system component to another in a way that is governed by rules and procedures.

Quick Supervisor allows a supervisor to monitor the operation of the entire **Quick Modules** system. It provides the supervisor with vital, real-time information to help in deciding the most efficient workflow and resource allocation.



Typical Form, Fax & Check 21 Solution

Fairfax Imaging designed *Quick Modules* from the ground-up as one common workflow and one common database. It provides full integration of forms, fax, check, and data capture processing in a single, logical process flow. These capabilities deliver the maximum benefit that imaging and data capture technologies possess. The system's modular design, extensive features, and built-in customization capabilities, can be rapidly deployed and easily changed or expanded to keep up with your business.



We know that only this high degree of integration will provide your business with a solution that meets and exceeds your requirements.

A Myriad of Applications

We designed *Quick Modules* with the user in mind. You have complete flexibility to combine various components of the *Quick Modules* system to meet your requirements. For example, a remittance processing solution can be customized for almost any application, such as:

- Catalog Order Fulfillment
- Check Processing
- Fax Order Entries
- General Product Fulfillment
- Government Tax and Wage Processing
- Lock Box Processing
- Mail Order Pharmacy Processing
- Mortgage Payments
- Wholesale / Retail Remittance

An elegant and robust forms processing solution (excluding checks) can be customized just as easily for other applications such as:

- Credit Card Application Forms
- Insurance Applications
- Proof of Deposit & Payments
- Registration Forms
- Sales Order Forms
- Subscription Forms
- Tax Forms
- Vehicle Registration Forms

Fairfax Imaging works closely with its clients to provide the most effective solution raising your productivity to maximum levels. Each *Quick Modules* installation is easily tailored to the specific needs and applications of the client. Whatever your requirements, you'll get a high-quality, individualized choice of system solutions.

The Superior Choice

When it comes to mission-critical document, fax and payment processing solutions Fairfax Imaging defines the playing field. Others may compete with us product by product, but Fairfax breaks away when it comes to:

Comprehensive, integrated offerings

The Fairfax suite of solutions covers virtually every aspect of document, fax and payment processing in a seamlessly integrated manner.

Service and support

Fairfax Imaging prides itself on its long-standing commitment to serving and responding to its fast growing client base.

Depth of relationships

The marketplace views Fairfax as a leader; paving the way for satisfied clients, high-profile partnerships, and innovative solutions that add value to our offerings.

Our focus on quality and commitment has resulted in becoming one of the leading providers of documents imaging and data capture solutions.